

Tatami Sheet

Collection	Terasu	
Style Number	0796V	
Welding Rod Style Number	353VS	
Construction	Commercial Heterogeneous Sheet With Fiberglass	
class	Type I, Grade 1, Class B	
Backing Class	4-ply fused backing system	
Finish	ExoGuard®	
	U.s.	Metric
Wear Layer Thickness	20 mil (0.02 in)	0.51 mm
Overall Product Thickness	0.087 in	2.2 mm
Installation Type	Dry Back	
Recommended Adhesive	S150-95 Resilient Tile Spray, 4200 Resilient Sheet 1 Gallon, 4200 Resilient Sheet 4 Gallon, 2200 Resilient Tile 4 Gallon or 4151 Multi-Use Premium 4 Gallon	



Packaging

Actual Roll Size	6.56 ft w x 68.58 ft l	2.00 m w x 20.90 m l
Area Per Roll	50.75 sy/roll	42.43 sq m/roll
Weight Per Roll	337.7 lbs	153.18 kg

Recommended Installation Method



Reverse

Coordinating Products

- LVT: Terrace 2.5 Mm, Terrace 5.0 Mm
- Sheet: Reed Sheet, Roji Sheet
- Carpet Tile: Botan Tile, Hana Tile, Kusa Tile
- Broadloom: Botan, Hana, Kusa

Performance + Testing

Residual Indentation (Astm F1914)	Passes
Flexibility (Astm F137)	Passes
Resistance To Heat (Astm F1514)	Passes
Resistance To Light (Astm F1515)	Passes
Resistance To Chemicals (Astm F925)	Passes
Coefficient Of Friction (Astm D2407, Slip Resistance)	>0.6, meets the recommended static coefficient of friction for ADA walking surfaces and accessible routes

Test Reports may be included or listed by the manufacturing/inventory style number as opposed to the noted selling style number.

Warranties

15 Year Commercial Limited  
[Commercial 15 Year Underbed Bond Warranty](#)

Diversity, Equity & Inclusion

We believe all humans are equal. Individually and collectively, we need to proactively create and promote opportunities that give everybody an equal footing in life. We nurture an environment where every voice and perspective can be heard, and proactively promote accessibility and inclusivity inside our network and beyond. One proof point is our ability to meet the criteria of the Social Fairness pillar of the Cradle to Cradle Product Standard. At Shaw Industries, we promote supplier participation that is reflective of Shaw's diverse customer base and local community. More than 42% of our spend\*\*\*\*\* is with small and diverse businesses. We believe having a strong Supplier Diversity Program is strategic for bringing more innovation to our businesses and openingnew markets for growth.

Attributes + Certifications

Climate Impact	
Environmental Product Declaration (EPD)	3rd Party Certified in Accordance with ISO 14025, EN 15804, & ISO 21930:2017
Total Recycled Content	0% (Pre-Consumer 0%   Post-Consumer 0%)
Global Product Assessment	FloorScore®   Certified
	CE Marking (EN 14041)   3rd Party Certified
	Country of Origin   Imported

Green Leed Contribution Credit

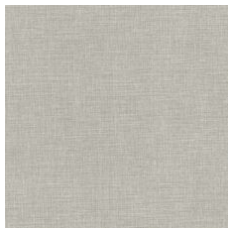
MR Credit: Building Product Disclosure and Optimization	3rd Party Certified in Accordance with ISO 14025, EN 15804, & ISO 21930:2017
Environmental Product Declarations - Option 1: Environmental Product Declaration (EPD)	FloorScore Certified
EQ Credit: Low Emitting Materials	
Option 1: Product Category Calculations	
<a href="#">Installation Guidelines</a>	
<a href="#">Maintenance Guidelines</a>	

Please visit [www.shawcontract.com](http://www.shawcontract.com) for the most current warranty information.  
Specifications are subject to nominal manufacturing variance. Material supply and/or manufacturing processes may necessitate changes without notice.

This product is an exclusive design and may not be duplicated in any manner. Use of this design in the creation of another product design is also strictly prohibited.  
\*\*\*\*\*Allowable spend is domestic (US) spend in categories in which we have diverse suppliers from which to choose. Compared to non-allowable spend which includes categories in which we do not have domestic, small or diverse suppliers available to meet our needs.

Visit [shawcontract.com/testing](http://shawcontract.com/testing) for more information.

## Available Colorways



Pebble 96114  
Weldrod 07332



Evening Glow 96130  
Weldrod 07331



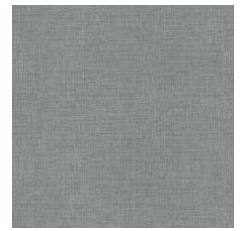
Tea Garden 96216  
Weldrod 07332



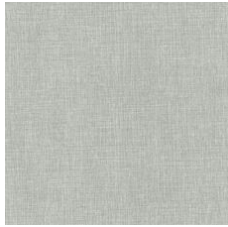
Moss 96330  
Weldrod 07332



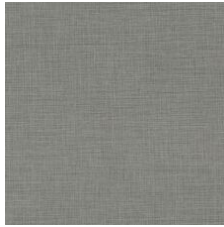
Cascade 96416  
Weldrod 05008



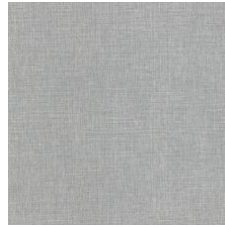
Tidal Basin 96440  
Weldrod 02003



Zen 96515  
Weldrod 01203



Wind Chime 96530  
Weldrod 01225



Stroll 96535  
Weldrod 01203



Stepping Stone 96700  
Weldrod 02019



Pagoda 96710  
Weldrod 05244



Shakkei 96761  
Weldrod 02001



Corporate Headquarters +1 800 257 7429 | +1 706 532 7984 | Atlanta +1 404 853 7429 | Bengaluru +91 80 6773 0202 | Beijing +86 10 6568 588 | Chicago +1 312 467 1331 | Dubai +971 4 584 6956 | Hong Kong +852 2623 0371 | Latin America (Miami) +1 305 827 5912 | London +44 207 961 4120 | Los Angeles +1 800 233 1614 | Melbourne +61 3 9939 8543 | Mexico City +55 5010 7600 | Mumbai +91 22 6284 5050 | Nantong +86 400 800 7429 | New York +1 212 953 7429 | Paris +33 (0) 1 81 22 44 39 | San Francisco +1 415 955 1920 | Santiago +562 2431 5000 x 550 | São Paulo +55 11 3071 1702 | Shanghai +86 21 3338 4000 | Singapore +65 6733 1811 | Sydney +1 800 556 302